

No matter how well you run your Infor ERP Swan system, it is inevitable that traditional stock-takes will still be required – if only to confirm the accuracy of the system! The Stock-Take Module has been developed to simplify the procedure, and provide an interface with hand-held input terminals.



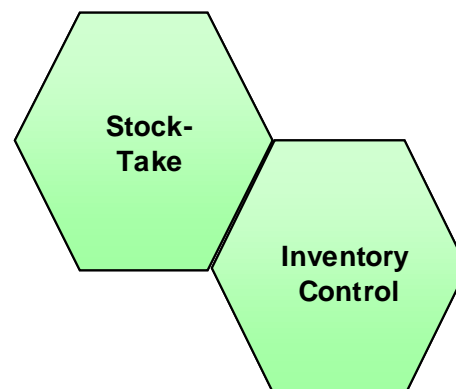
To reduce the need to halt all stock movements during stock-take, the module takes a snapshot of the stock file. System stock movements can then continue. Counting sheets can be produced from the snapshot, and discrepancies between the “computer stock” and the actual stock marked up. As soon as the physical count has taken place physical stock movements can recommence. The numbers

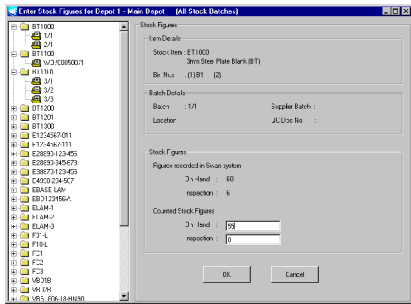
are then keyed in to the Stock-Take Module, and reports are immediately available showing the percentage discrepancy and the stock value of these variances. Thresholds can be set to highlight only major variations.

Once these numbers have been accepted, the system stock file is updated as “Changes after stock-take”. This update uses relative numbers (increments or decrements) since normal stock movements may have taken place in the meantime. The standard options of Nominal postings are used.

As standard, the Stock-Take Module accepts a CSV ASCII file input of the actual count against each item code. Interfacing to specific hand-held terminals can be arranged as a bespoke project. Alternatively, any number of system users (up to the license limit) can make use of the “Enter Actual Stock Quantities” screen on fixed or radio-connected PCs.

- ◆ **Freeze Stock Quantities.** This creates a separate data file listing stock and inspection stock quantities by depot.
- ◆ **Selection Parameters.** Each depot can be flagged for inclusion in stock-takes. This can be changed for each stock-take exercise. A table of stock prefixes can be set up for exclusion of items from the variance analysis reports. They will still take part in the stock-take. Serial numbered items are not included in the stock-take.
- ◆ **Printing of Counting Sheets.** A report is available to print counting sheets from the frozen list, by item, bin and depot. Batch details are included for batch traced items.





- ◆ **ASCII file output.** A csv file output of fixed format is available listing stock items by depot, with actual-stock and inspection-stock values. This could be used as an upload for a handheld terminal to allow stock number validation and quantity prompts.
- ◆ **Manual entry of Actual Stock Quantities.** This screen is selected by depot or bin. Actual item counts can be quickly entered

against batches. Values can be re-adjusted up until the final system update

- ◆ **ASCII file input.** This will accept csv files of a fixed format from a handheld terminal. Multiple files can be imported, and their count values against any item will be accumulated. Note: file imports cannot be accumulated with manual entries.
- ◆ **Progress graph.** On overview graph shows the progress of counting, and variance so far by depot and product group.
- ◆ **Variance Analysis Report.** Details each variance, subject to a threshold, and summarises the number of items with variances, the variance value and as a percent of all stock.
- ◆ **Update Actual Quantities.** This updates the live and the month-end stock figures. An audit report is produced.
- ◆ **System Requirements.** Infor ERP Swan for Windows, System version 4.2.x.

