

## Shop Floor Data Collection<sup>+</sup>



focus on essentials

Many companies would like to extend their bar-code systems to achieve a total stock tracking philosophy - If you move it, scan it. The use of a scanning wand connected into the keyboard cable (barcode wedge) is a very simple and effective way of minimising keying errors when updating stock movement screens and works order completions. However, this does not provide completely hands-free automation, and is of little use with radio-linked terminals or conveyor-mounted scanners. Based on a number of bespoke projects in this area, a new Windows module has been produced to provide a standard but flexible core for a wide range of possible applications.

The Infor ERP Swan SFDC+ module provides a central collection point for all stock movement transactions, and gives complete control over how and when those transactions are presented to the Infor ERP Swan system. A label printing system runs alongside the stock-movement tracking, allowing new labels to be printed as appropriate to each new status or storage location.



Transactions can be submitted on a polling basis, or manually one-by-one, a particularly useful mode for testing. Failed transactions can be edited and re-submitted. The data interface to the transaction spool is compatible with a number of collection terminals and readers.

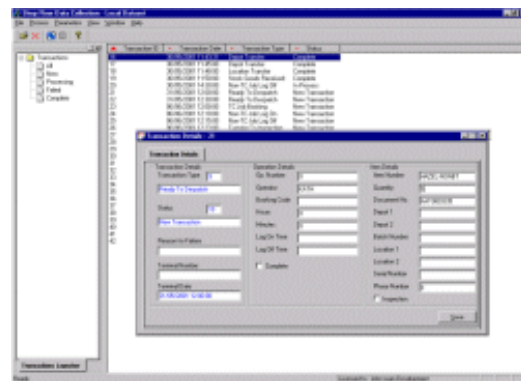
The label-printing system has a dedicated interface to LabelView Gold. A full set of possible fields for each stock movement is passed to LabelView, which provides an interactive layout screen for specific user-defined labels. LabelView outputs to a variety of general and specialist printer types.

### Transaction Data Spool.

An MS-Access .mdb file forms the interface for transactions. Specific software may be required for non Infor ERP Swan supplied bar-code reader devices to add transactions to this file in the correct format.

### Transaction Control Console.

The transaction list may be viewed and can be filtered by status. Transactions can be submitted individually or in bulk to the system. Failed transactions may be edited and re-submitted.



### Transaction Types.

The SFDC module can process any system transaction involving stock movement.

### Polled Submission.

A polling period can be set to scan the transaction spool, and new transactions submitted automatically to the system.

### Audit Trail.

A continuous audit trail report is maintained with a choice of clear-down options.

### **Label Printing.**

Each type of successfully submitted transaction can be set to trigger the output of a specific label type ie, a different label for each stock movement station. The content of the label will be generated from the actual post-transaction system data.

### **Label Layouts.**

Labels are designed and printed using LabelView Gold, which supports a number of general and specialist label printers.

### **System Requirements.**

- Infor ERP Swan for Windows
- System version 4.2.n.
- LabelView Gold.

