

Customer Support

Support Line: 0121 615 8420

Fax : 0121 615 8434

INFOR ERP SWAN NOTES FOR GUIDANCE

PASSING YEAR END WITHOUT UPDATING THE CALENDAR ROLL UP

Number of Pages : 4

Date : 30 November 2009

1. Introduction

The first Monday in 2009 was set at the previous year end and it is now required to set the first Monday in 2010.

When the end of the 2009 calendar has been reached without the Swan system calendar being updated, the first user on the system after the date has been passed will be presented with the following message:



These notes are to advise the user on the correct action to take.

2. Procedure

- a) Say "YES" to the above. If Routings and Capacities are used the following screen will then be offered:

The screenshot shows a window titled "MANUFACTURING-SYSTEM - Infor ERP Swan Offenham". The main area contains a dialog box with the following text and input fields:

First Monday, this year | 04Jan2010 |
No. of weeks, this year | 52 |
First Monday, next year | 03Jan2011 |

At the bottom of the window, there is a button labeled "SET WORK CENTRE MASTER CALENDAR".

- b) On acceptance of the date the following is presented :

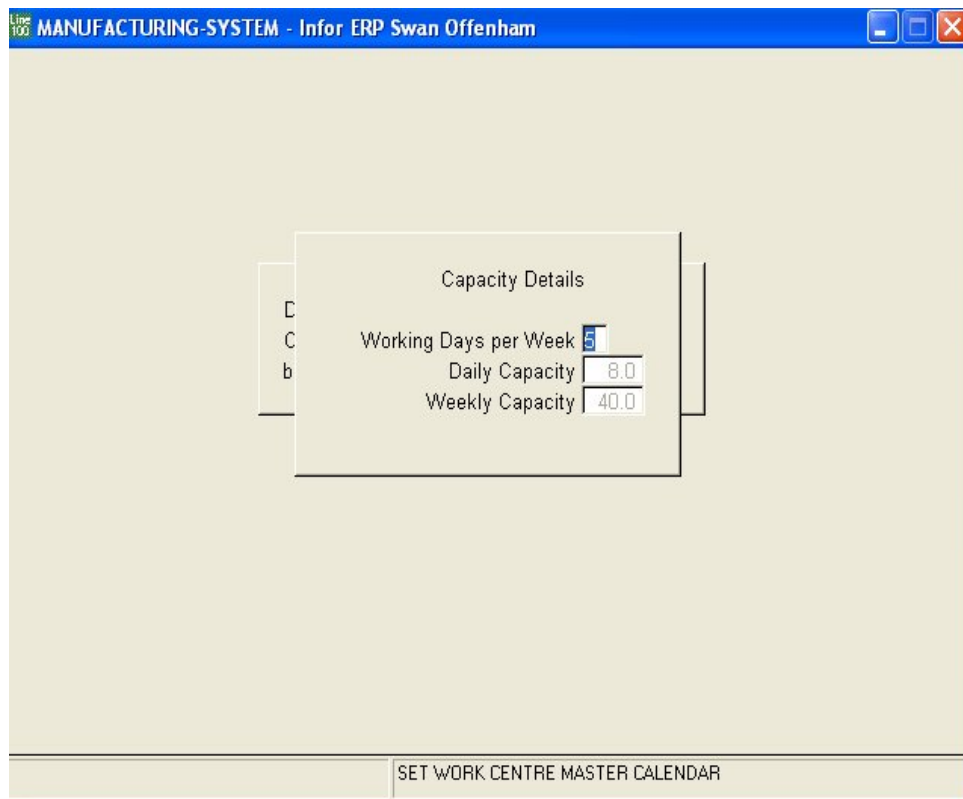
The screenshot shows the same window as above. The main area contains a dialog box with the following text and a checkbox:

Do you want to re-create the
Capacity Planning Master Calendar
based on the new year ? (Y/N)

At the bottom of the window, there is a button labeled "SET WORK CENTRE MASTER CALENDAR".

Say "YES" to the above prompt.

c) The user is then offered to Set Work Centre Master Calendar as follows:



Enter through the details offered or change as required and accept.

3. All users should now amend the Shop Calendar. This is found in:

Parameters and Utilities
Parameters
Calendar Maintenance
Amend
Enter Calendar Year (enter current year 2010)

NOTE:

Check each year for the full range of years in your system.

The following dates need to be entered:

- i) Easter Weekend (Swan does not set this because of Company working practices).
- ii) Company shutdowns

NOTE:

This automatically updates the Routings and Capacities Master Calendar

