

Spindle Professional 2009 SP2



Easy to use



Scheduling



Document automation



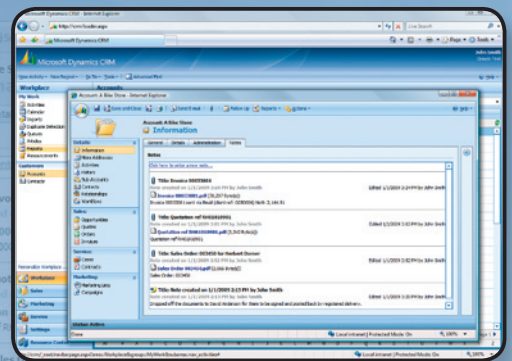
Microsoft Dynamics CRM

AUTOMATES DOCUMENT INTEGRATION INTO CRM

- > Automates the capture and filing of documents from business applications
- > Enhances the information held in CRM
- > Consistent error free filing

Printed documents from other business applications can be automatically filed by Spindle Professional 2009 against the right company and/or contact in Microsoft CRM. Users of Microsoft CRM are therefore able to see the complete picture of all interactions for that company.

With support for Microsoft Dynamics GP, Microsoft Dynamics NAV, Microsoft SharePoint, and now Microsoft Dynamics CRM, Spindle Professional 2009 covers the Microsoft Dynamics range.





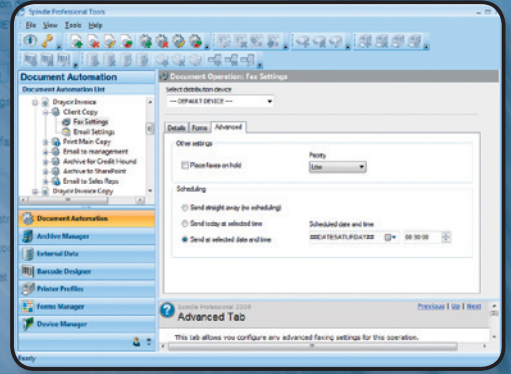
Fax Scheduling

FAX DOCUMENTS WHEN YOU WANT

- > **Save money by sending faxes off-peak**
- > **No more tied-up phone lines**
- > **Works with GFi FAXmaker, Tobit FaxWare and ZetaFax**

Fax scheduling allows you to send your faxes at the most appropriate time, whether that's in the evening or even over a weekend. This helps keep your fax and telephone lines free during normal office hours for those important faxes you wish to send or receive. Scheduling your faxes could reduce the cost of sending a fax by up to 81%*.

*Source: BT standard rate vs. BT weekend rate as at January 2009



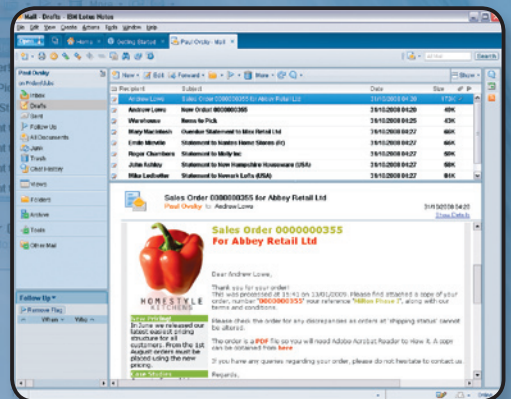
IBM Lotus Notes Email Support

EMAIL QUICKLY AND EASILY

- > **Seamlessly dispatch batches of documents via email**
- > **Supports HTML emails**

Spindle Professional 2009 directly supports the Lotus Notes email client, streamlining the emailing process and allowing users to send batches of documents quickly and easily. Users can now take advantage of the powerful features of HTML based emails including adding graphics, selecting fonts, styles and colours.

Spindle Professional 2009 also supports Outlook 2000 – 2007, Tobit David, any SMTP compliant email server and any MAPI compatible email client.

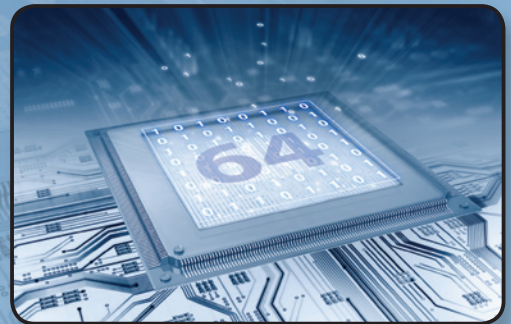


64-Bit OS Compatibility

UTILISE NEXT GENERATION TECHNOLOGY

With the addition of 64-bit compatibility you can now take advantage of the benefits offered by Spindle Professional 2009 across your entire hardware infrastructure. Spindle Professional 2009 works with the following x64 versions of Windows:

- > **Windows Vista**
- > **Windows Server 2003**
- > **Windows 7**
- > **Windows Server 2008**



Windows 7 Compatibility

PROTECTING YOUR INVESTMENT

- > **Tested to meet the technical requirements to be Compatible with Windows 7**

Only "Compatible with Windows 7" software and devices have passed Microsoft designed tests for compatibility and reliability on PCs running the Windows 7 operating system.



Draycir Ltd. 3 De Montfort Mews
Leicester LE1 7FW, United Kingdom
T:0845 123 2941 F:0870 011 8910
E:sales@draycir.com W:www.draycir.com

Copyright © 2002 - 2010 Draycir Ltd.
All rights reserved. Draycir, the Draycir logo, Spindle Professional and the Spindle Professional logo are either trademarks or registered trademarks of Draycir Ltd.
All other trademarks acknowledged.